

BUILDECK

DISTRIBUTED BY **AFIX** GROUP.COM



Scaffold-Based Decking System

Patented System GB 2518159
1400kg load capacity
Create a platform at any height
Fit any space / shape
Bespoke design service
Corporate colour option

The BuilDeck System uses standard scaffold tubes and fittings, providing a safe, load-bearing platform at any height.

Can be designed to fit any shape, with custom panels to suit.

A patented system with a load capacity of 1430kg/m^2 / 14.3kN/m^2

The strongest in the industry.

Our system can be delivered anywhere in the UK.

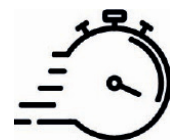
Patented System
GB 2518159



High load capacity



Rapid installation



Safe & secure
in all conditions



Versatile & Adaptable



Independently tested
Compliance

Stronger than anything on the market, using BuilDeck ensures the highest levels of safety on your site.
BuilDeck is made from 99% Recyclable Materials.

BUILDECK

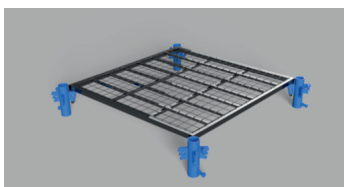
BUILDECK

DISTRIBUTED BY **AFIX** GROUP.COM



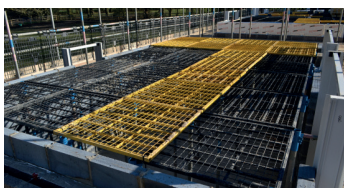
BUILDECK PANELS

Fully adjustable floor panels can be easily installed to provide an incredibly safe, stable and strong working platform.



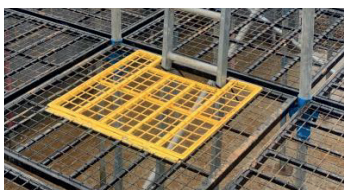
BUILDECK LAPMATS

BuilDeck have created a system that allows for a perfect customised fit for your project.



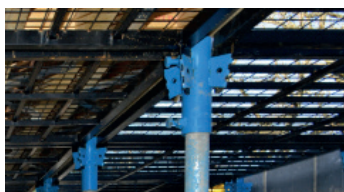
BUILDECK HATCH

The BuilDeck System can be hand railed and toe boarded to TG20:13.



BUILDECK BOSS

Our unique design allows complete integration with standard scaffolding.



TRANSPORT & STORAGE

Compact stacking system, allowing easy storage and loading.



Patented System

GB 2518159

14.3kN/m² load capacity

Variable Height

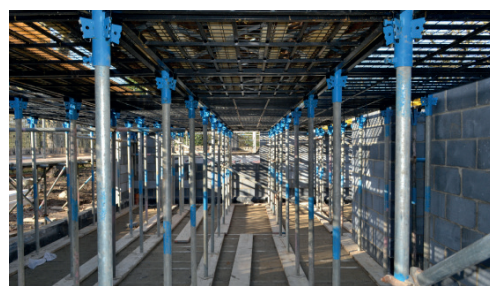
Fully Integrated system

Bespoke Design service

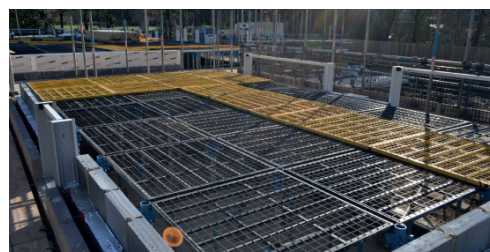
Limitless applications

Corporate colour option

Available UK wide



BUILDECK



www.buildeck.co.uk

T: +44 1992 946 355 | E: office.uk@afixgroup.com

Registered distributor: Esgors Estate, High Road, Thornwood, CM16 6LY - United Kingdom

BUILDECK